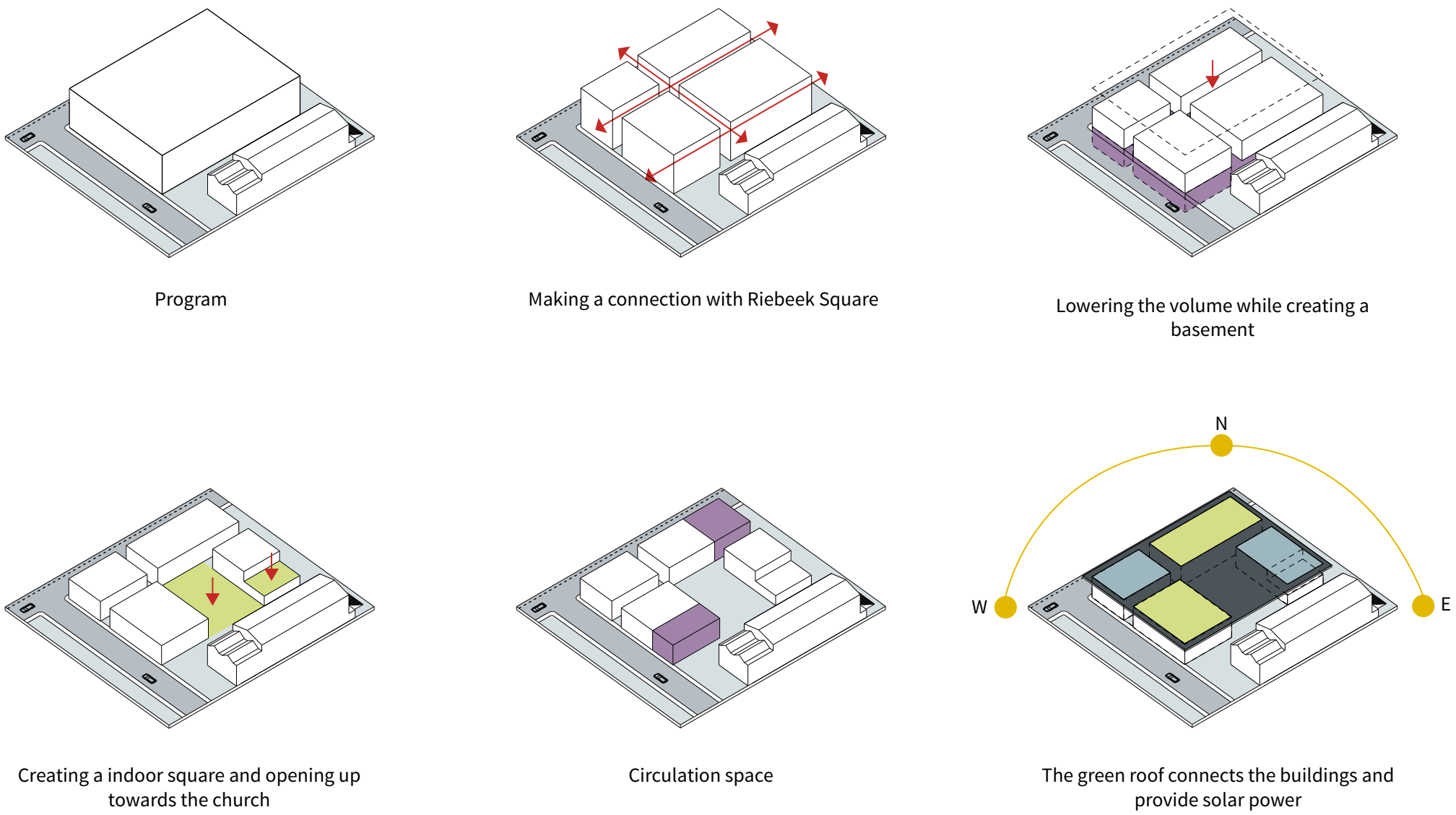


Film Academy Riebeek Square

Identity



The connection with Riebeek Square and the surrounding streets is made through three semi outdoor passages cutting through the buildings. The aim of the complex is that it will be understated in a way that it rather enhances than dominate the surrounding square. Lowering the volume is a important decision to achieve this. The basement covers the whole site and in this way connects the buildings. The spaces that do not need natural light are situated in the basement while the spaces who

do need natural light are situated more towards the top of the building. To invite the square even more into the building the narrow 'streets' created by the passages cutting through the buildings will invite you to the square as if you take a look behind the scenes of a movie. The square is the central hub where exciting things can happen. On the other side where the building touch the street there is a big atrium at ground level that is looking down to the basement and running along the whole facade.

Urban Threshold 1:1000

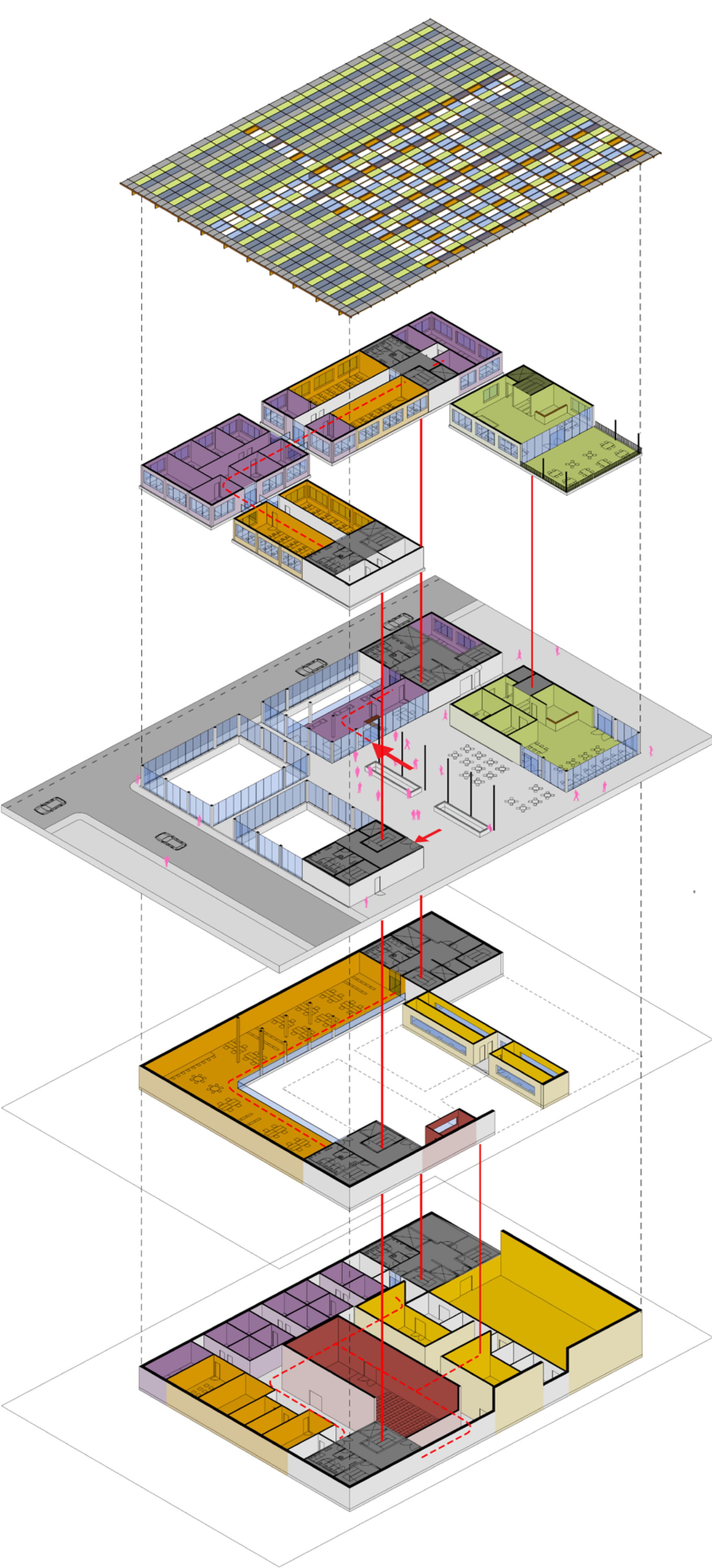


The Riebeek Square will be redesigned as part of the complex. It will, just as the school, become a pedestrian friendly area. This means that the parking will go below ground, the square get more green, more seating possibilities, more shelter and more warm surfaces. There will be more routes

from every corner to the building. The square will continue through the narrow streets inside the complex to the inside square. The streets enclosing it from the side, church and shortmarkt street, will be one way streets to make it more pedestrian friendly. The top and bottom streets with more traffic

will be 'closed' of by trees and wider pavements to give it a safer appearance. In the median where there is now parking there will be the ramp leading to the underground parking lot.

Program & Routing



Solar/Green Roof +7.6m
Combination of solar panels, vegetation and it's providing shadow.

First Floor +3.8m

- Offices
- Classrooms
- Restaurant

Ground Floor +0.0m

- Entrance / Administration
- Restaurant

Basement -1 -3.8m

- Library / Workspace
- Soundstage Control Center
- Cinema Control Center

Basement -2 -7.6m

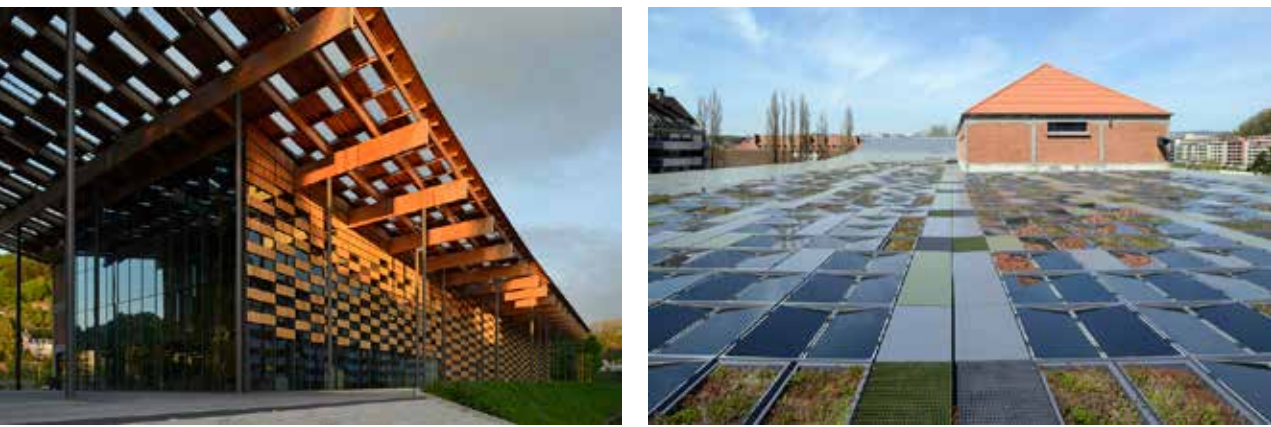
- Editing Suites
- Sound/Film Studio
- Cinema
- Small/Big Soundstage

Facade



The facade of the building exists of wood, glass and concrete. It stand out as it is a sober recognizable facade. The facade will be covered by a 'transparent' curtain of small wooden panels forming a checkerboard grid alternating with voids. The stainless steel mesh from Fabrik® is woven with wood panels. In combination with the floor to ceiling glass behind it it creates an almost transparent facade but at the same time shuts itself off from the street and direct pedestrians to the narrow openings leading to the square. Between the curtain the concrete slabs will be visible to once again show the layered structure that is important for this building. The facade facing the square will be more open. There will be no curtain of wooden panels but only vertical wooden strokes.

Roof



One of the key elements in the design is the roof. The roof connects, creates semi outdoor spaces and provide shelter for the pedestrians. The roof is blurring the limit between the interior and the exterior. It is a invitation to the general public to gather below for protection and see what happens behind the scenes. It will cover the inside square while on the outside edges it will extend a bit so it creates a canopy feeling. It will be composed of different materials such as glass, solar panels and vegetation. Integrating the solar panels in the roof will provide the building in its own energy supply. In consistency to the façade it creates a pixelated layer where the transparency is defined by the program beneath it. It gets for more transparent above the square and the semi outdoor passage that leads to the square, creating a 'shades of trees'. While it is more closed above the classrooms and the offices. While the roof in this way plays with light and shadow it also provides solar protection in a very simple and elegant way. By using warm materials such as wood it will create a warm feeling but it also take full potential of it being used as a simple solar protection shade.

Precedent

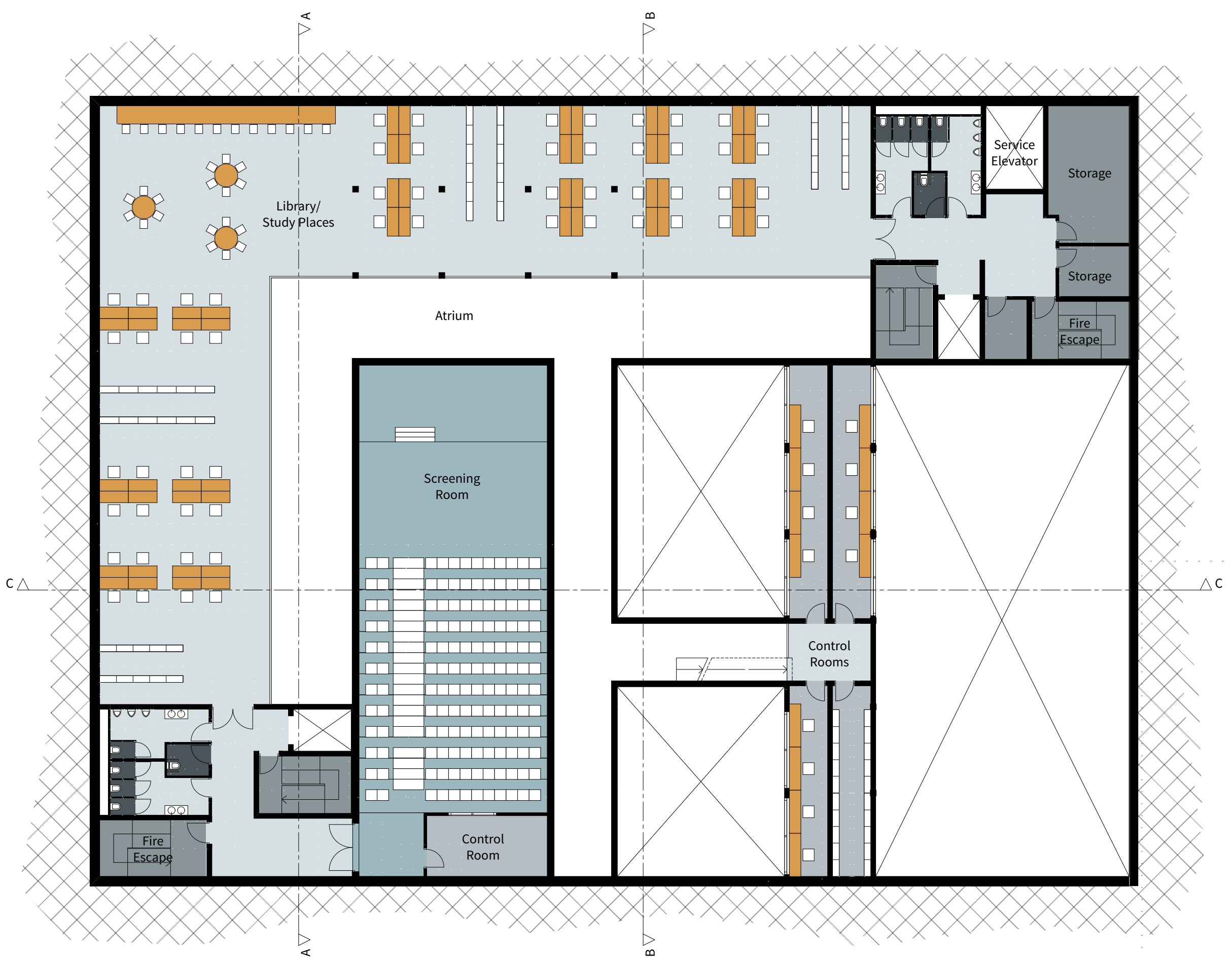
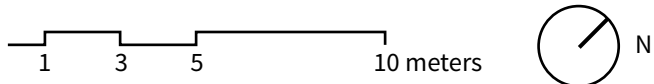


The top two pictures are from the Nagaoka City Centre Hall from Kengo Kuma & Associates. The layered building express a sense of transparency while embodying the idea of an energetic compact city. The structure, especially the roof, creates shapes of light and shadows on the central plaza. The use of wood, metal and glass creates a dynamic building envelope.

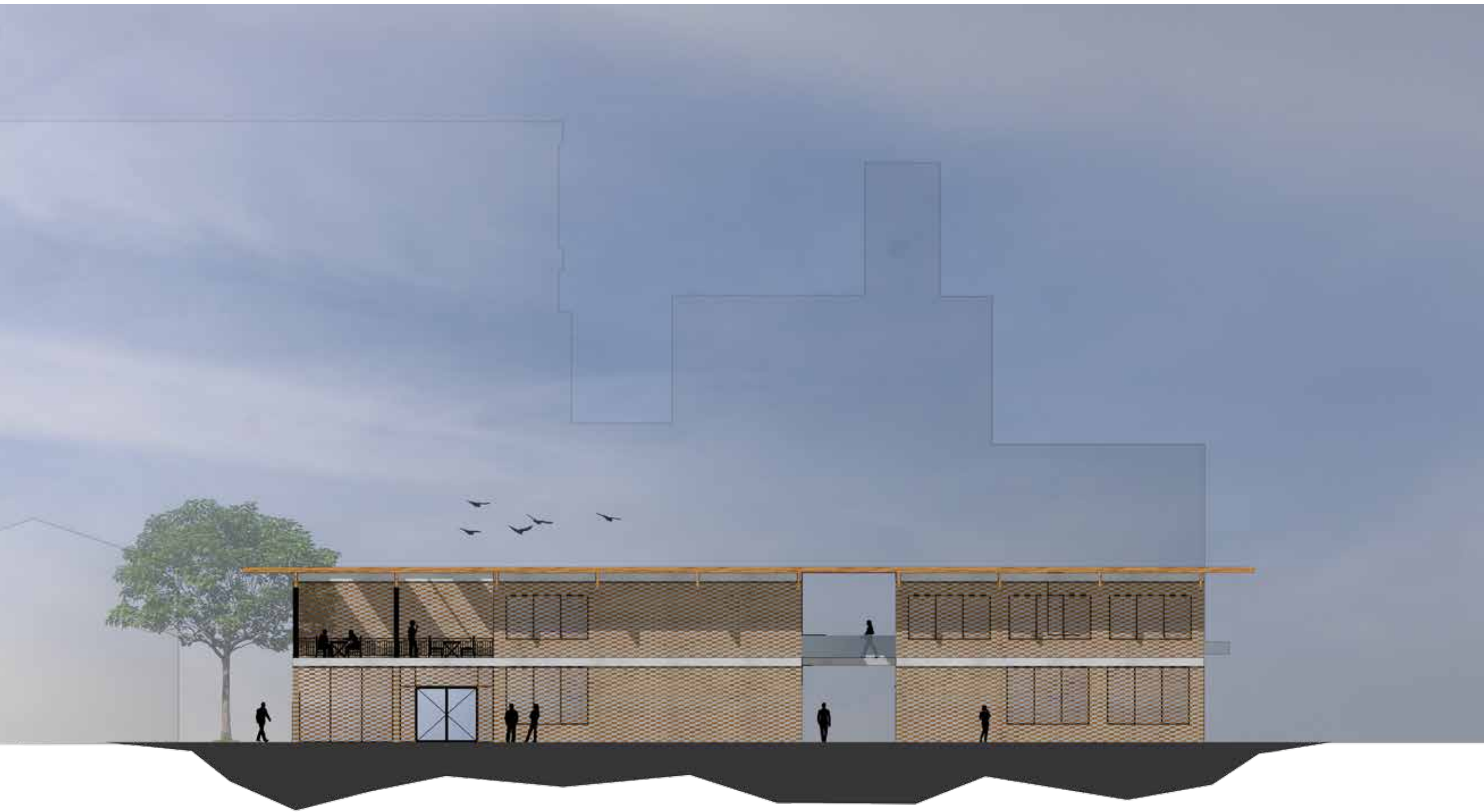
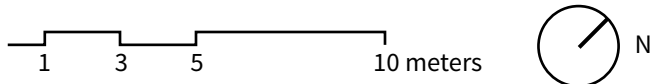
The picture on the left is the Cite des Arts et de la Culture which is also designed by Kengo Kuma & Associates. Once again the roof plays a major role in the way how lights enter the building. It also connects the separate buildings with each other and creating a semi-outdoor space, which is flooded of natural light. The transparency is partially defined by the necessity of the program below: opaque on top of the rooms such as classroom, administration, or exhibition room.



Level -2
scale 1:200



Level -1
scale 1:200



North Facade
scale 1:200



East Facade
scale 1:200

Film Academy Riebeek Square

Pim Haring | 216296412 | Applied Design 5 | 06/02/2017



Ground Floor
scale 1:200



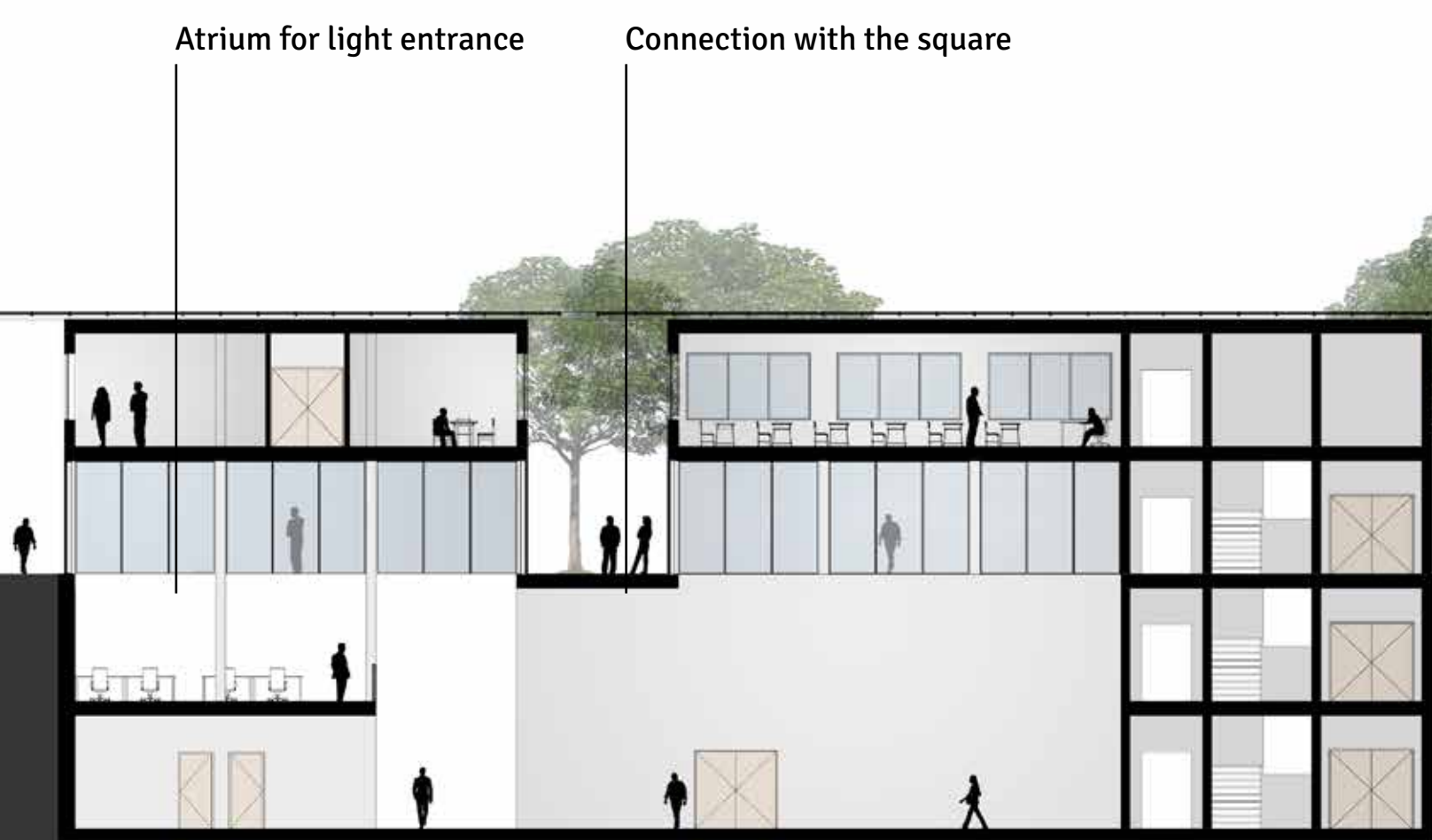
First Floor
scale 1:200



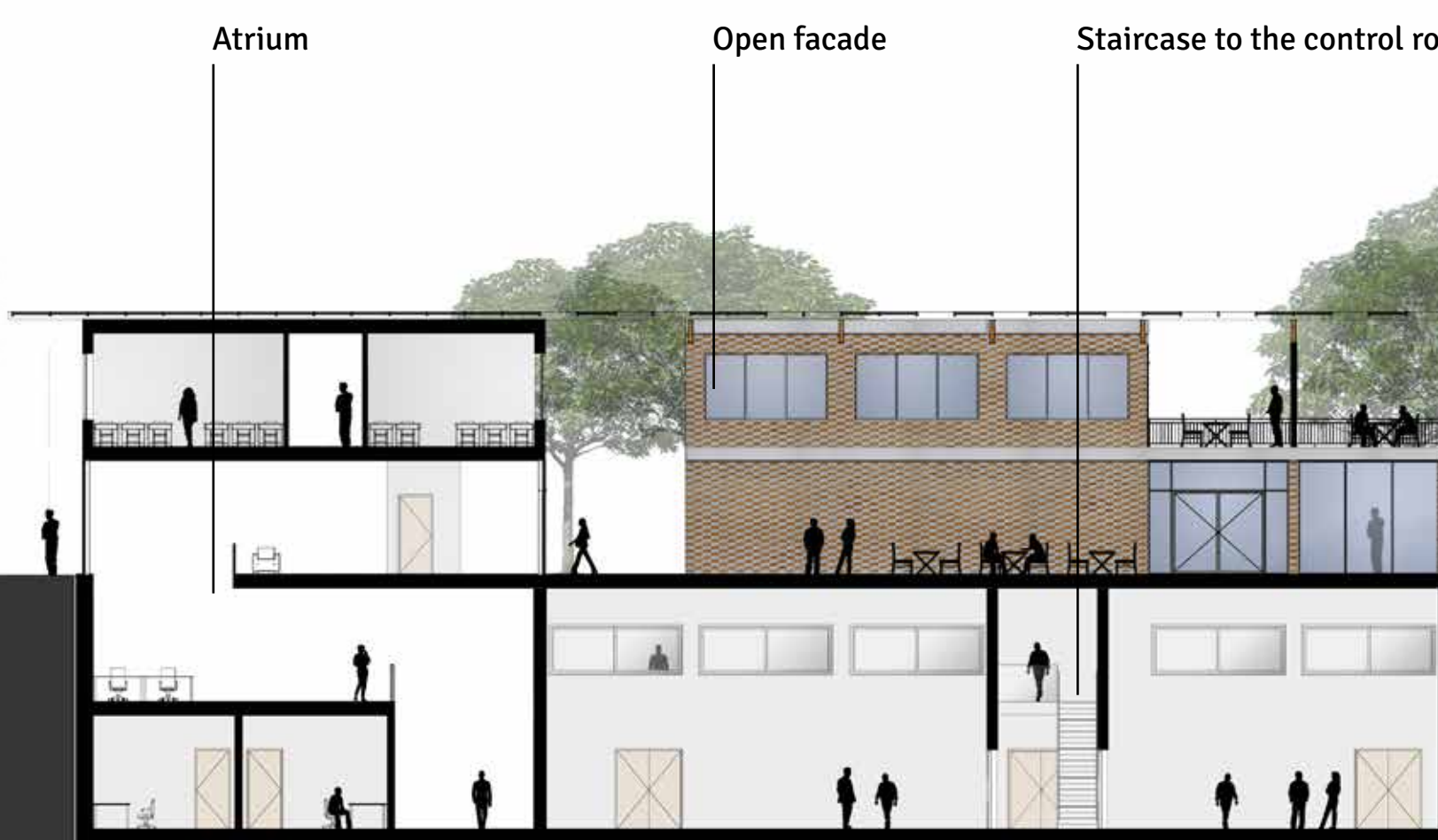
South Facade
scale 1:200



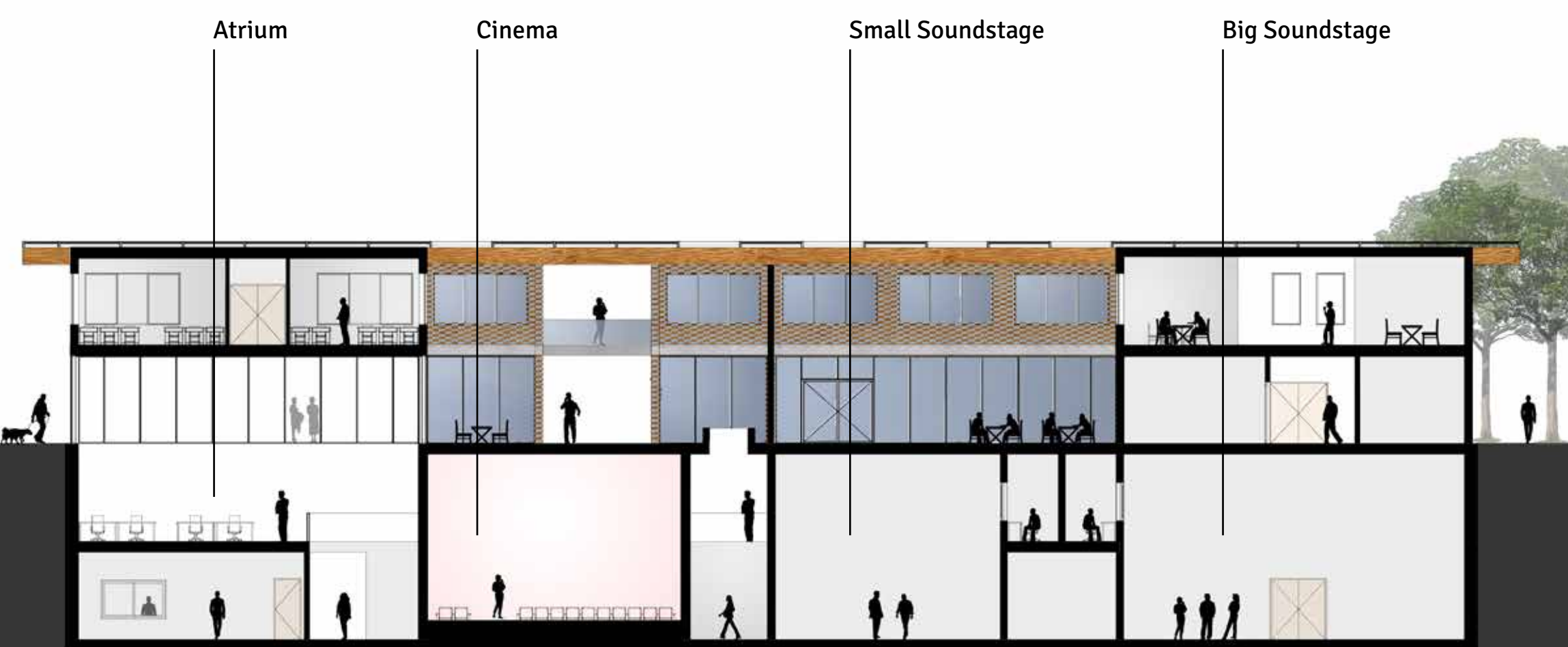
West Facade
scale 1:200



Section A-A
scale 1:200



Section B-B
scale 1:200



Section C-C
scale 1:200



Sectional perspective