

Location section

The location of the section is at Section A-A. This is a East - West facade. Where there are windows on the West facade but only concrete on the east facade. The facade of the building exists of wood, glass and concrete. The facade will be covered by FABRIK. The stainless steel mesh from Fabrik® is woven with wood panels. In combination with the glass behind it it creates an almost transparent facade but at the same time shuts itself off from the street while letting natural light in. The roof will also provide shadow in the form of a canopy.



Services diagramme



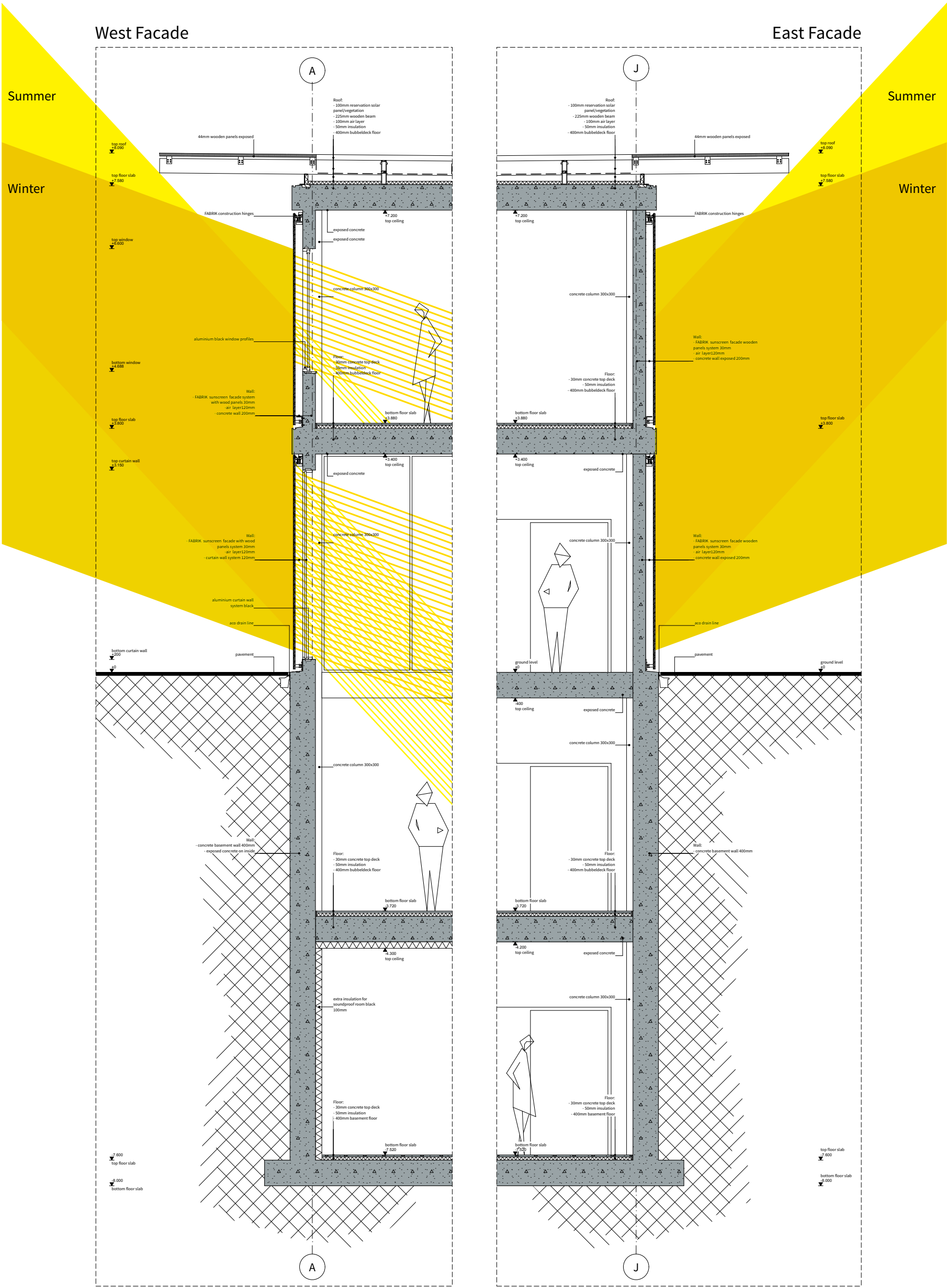
Structure

The structure of the building consists of a column structure with floor slabs. This choice was made to have a maximum freedom designing the floor plans. Because this is a Film Academy there are a lot of rooms who need a huge floor span without any columns standing in the way. That's why the floor slabs are made of the bubbledeck system. This system can reach a floor span of 15m without any need of a beam supporting it. In this way there is maximum freedom and it keeps the cinema's free of columns.

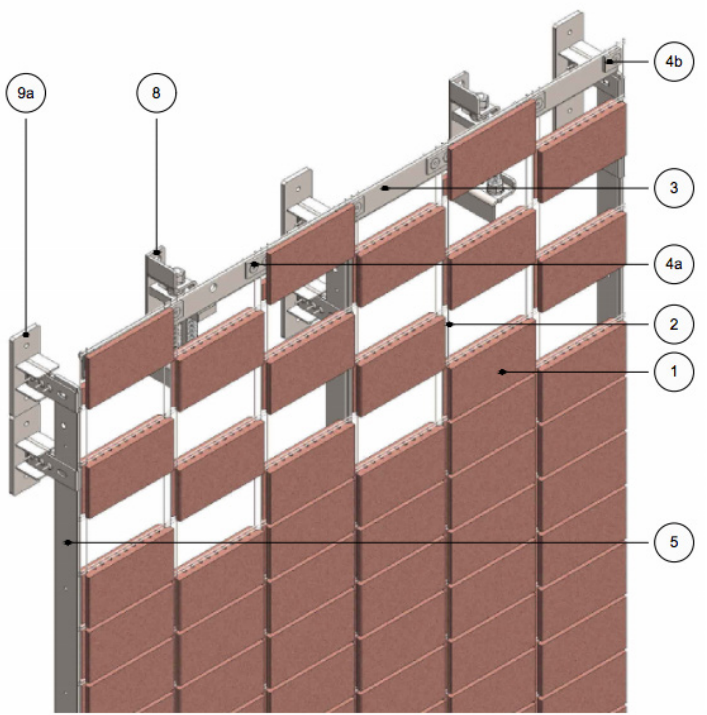
In the basement the columns are integrated with the load bearing walls on the side. To provide stability to the whole structure there are two cores with load bearing walls. These cores also include the lifts, staircase and the wet rooms.

The parking lot is allocated at the right side of the building. There is no parking beneath the building. The entrance of the parking lot is at the square and there is no direct connection with the building. The car entrance is in the median of the road. This is done to maximize the available parking space.

Solar impact facade

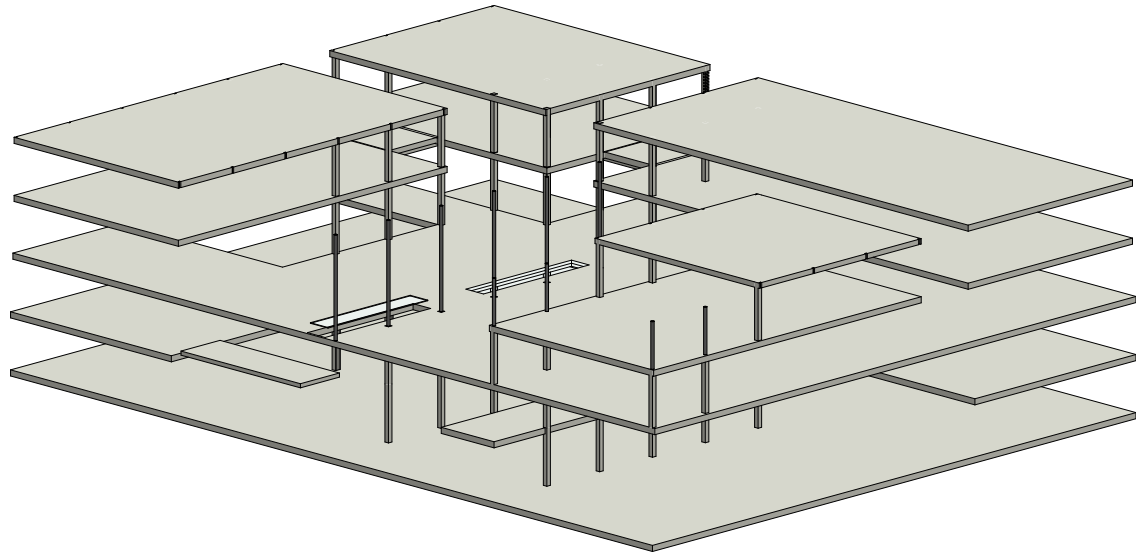


Technological precedent

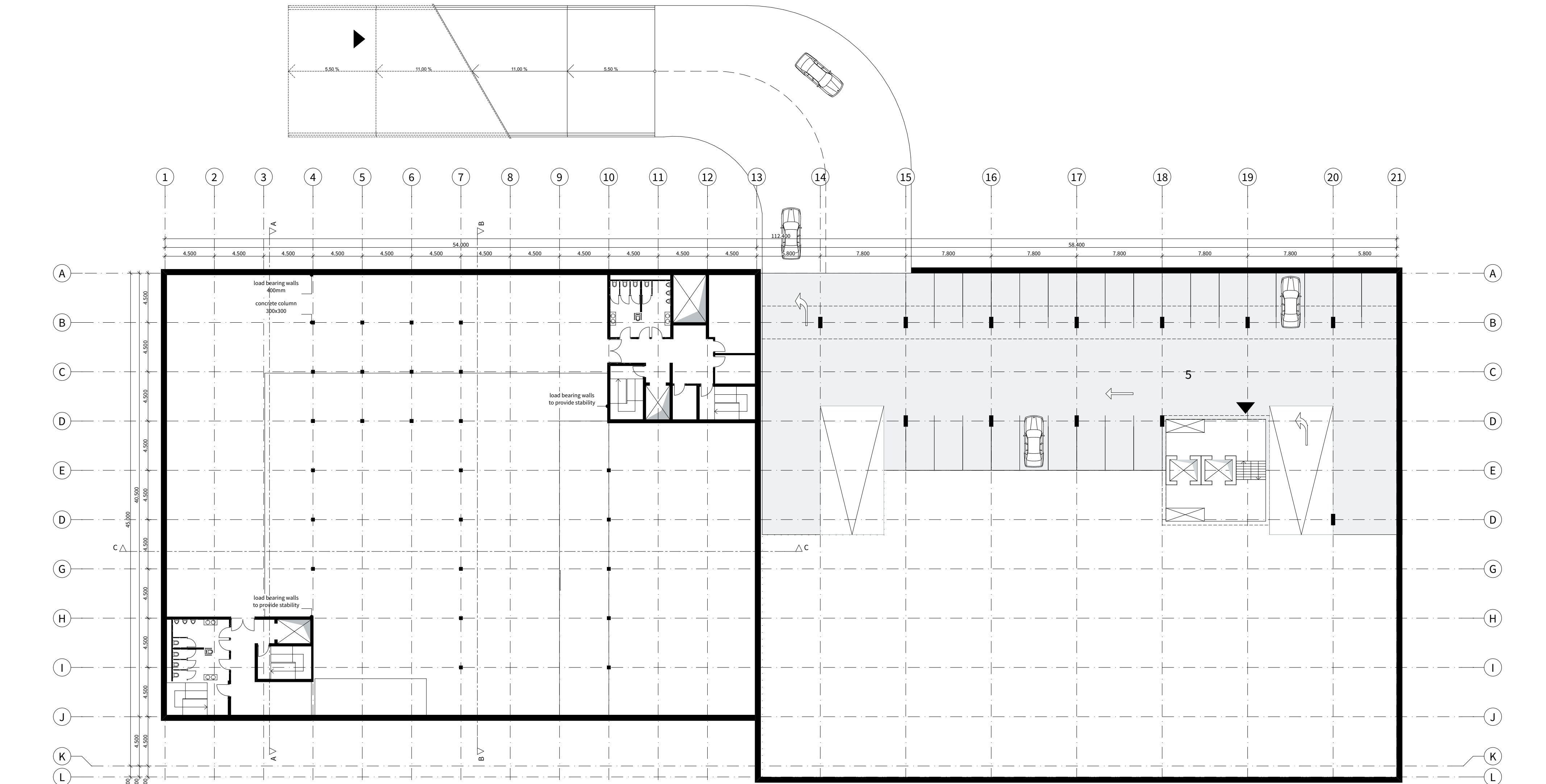
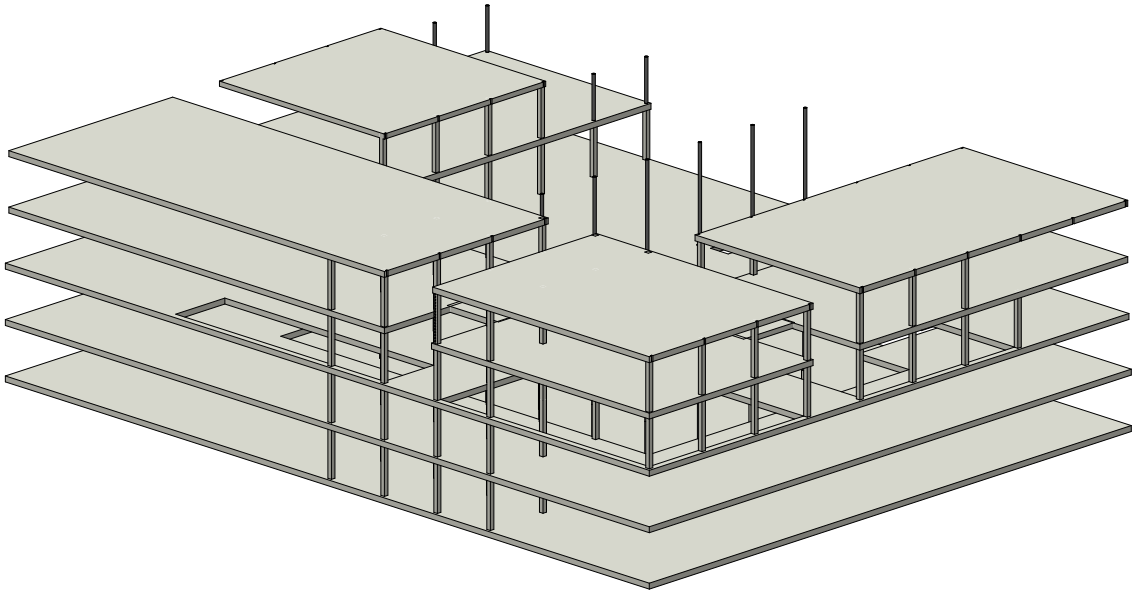


The facade will be covered by a 'transparent' curtain of small wooden panels forming a checkerboard grid alternating with voids. The stainless steel mesh from Fabrik® is woven with wood panels. Similar to a textile, Fabrik® sunscreen facade system by Flexbrick/Shildan allows you to "dress" your building in unlimited materials, shapes, colors, sizes, with different levels of translucence.

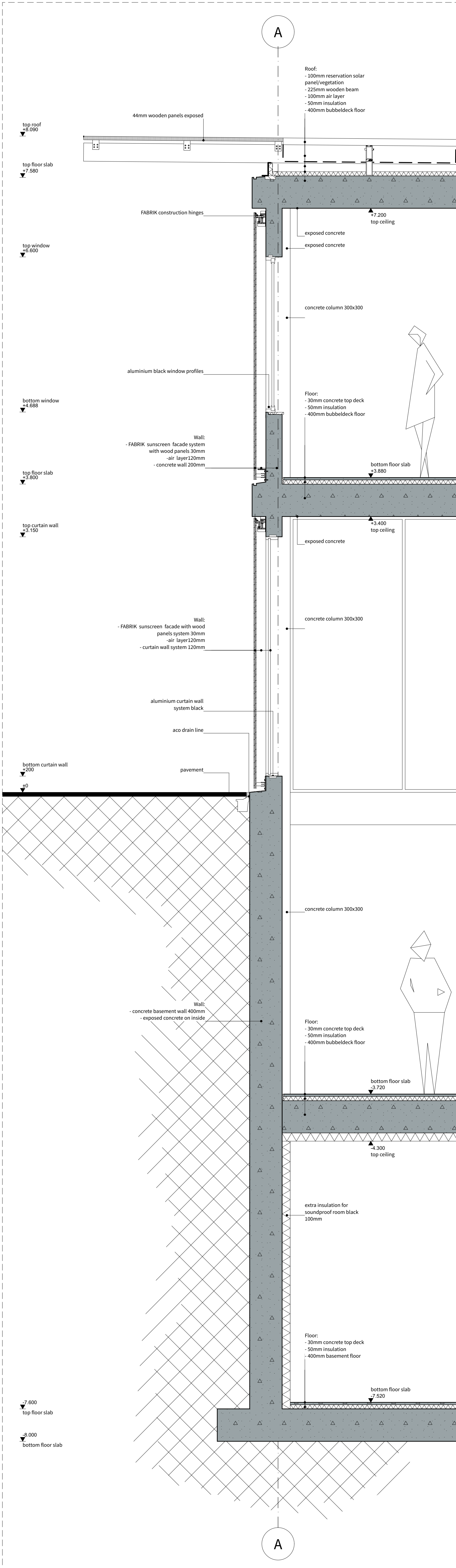
Structural Diagram as seen from North-East



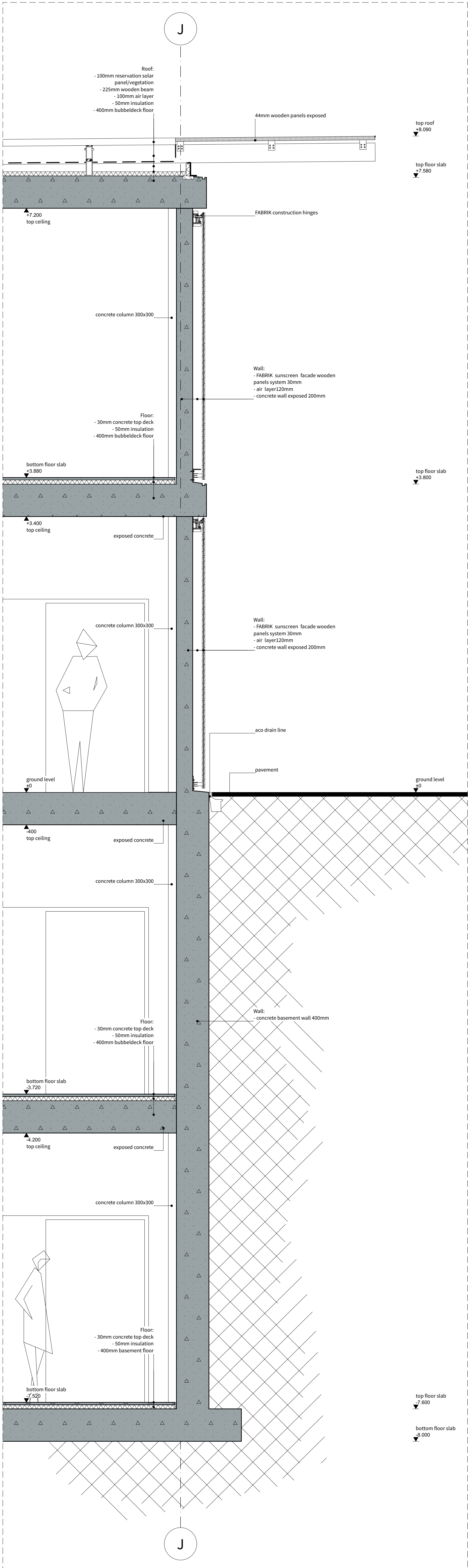
Structural Diagram as seen from South-West



Basement -1 | 1:250



Section A-A | West Facade | 1:25



Section A-A | East Facade